



SELIS: Towards a Shared European Logistics Intelligent Information Space

Project Fact Sheet

October 2016



SELIS unifies business, technology and capacity innovation for Green Logistics in order to deliver a *Shared European Logistics Intelligent Information Space* with a clear path towards 30% reduction of energy consumption and greenhouse gas emissions.

An exceptionally strong consortium of 38 European logistics stakeholders and ICT providers are leveraging EU IP from over 40 projects so as to create proof of concept Common Communication and navigation platforms for pan-European logistics applications, which will be deployed in 8 living labs representing the principal logistics communities. SELIS embraces a wide spectrum of logistics perspectives and creates a unifying operational and strategic business innovation agenda for Green Logistics.

Project results will be available in the form of easily deployable cloud infrastructure, aligned with leading industry regulations, operating standards and recognized best-practice to guarantee Quality of Service, Quality of Experience, and High Availability.

At a glance...

- Project start: 01/09/2016
- Duration: 36 months
- GA no: 690588
- Coordinator: Inlecom Systems Ltd.

Contact us

Project website: www.selisproject.eu

e-mail: info@selisproject.eu

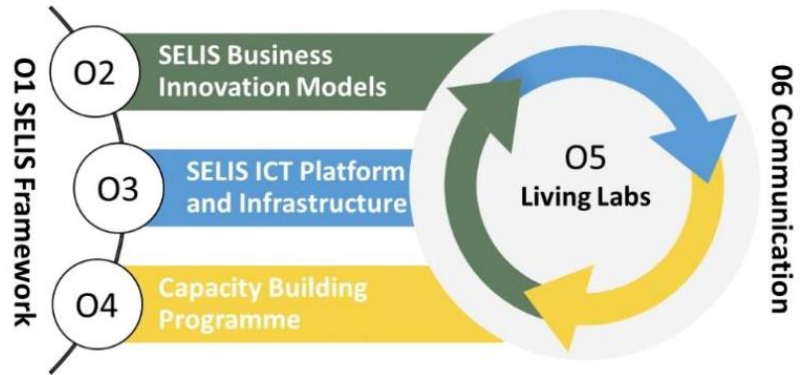
LinkedIn: <https://www.linkedin.com/groups/12001307>

Twitter: [@SELIS_Project](https://twitter.com/SELIS_Project)

SELIS in a nutshell...

Project Approach

1. Embracing a wide spectrum of logistics perspectives and creating a unifying operational and strategic business innovation agenda for pan European Green Logistics.
2. Establishing a strong consortium of logistics stakeholders and ICT providers, that can leverage EU IP from over 40 projects so as to create proof of concept of Common Communication and Navigation platforms for pan-European logistics applications in 8 living labs (LLs) representing the principal logistics communities.
3. Establishing a research and innovation environment using the Living Labs to provide data that can be used for discovery of new insights that will enable continuous value creation supporting the large scale adoption of SELIS.



Community Perspectives



Advantages

1. Connected nodes, provide a **distributed common communication and navigation platform** for Pan European logistics applications.
2. SELIS Community Nodes link with their participants' **existing systems** through a **secure infrastructure** and provide shared information and tools for data acquisition and use, **advancing Big Data logistics analytics**.
3. A 'lightweight ICT structure' enables information sharing for collaborative sustainable logistics at all strategic and operational levels.